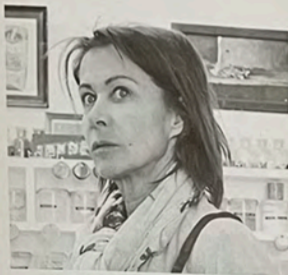




SERAX





ANITA LE GRELLE

Terres de Rêves

How does a Babylonian tower of clay become a successful tableware line? By sheer coincidence, according to Anita Le Grelle. It all started one day in 2013 when she decided to dismantle one of her old art works, a kind of Babylonian tower with stacks of cylinders and spirals, made from ceramic, wood and sand, and to reuse the clay to make a mold in the shape of a small bowl. The bowl grew and became a platter, which would then shrink back to become a plate before turning into a cup. Thus, her collection Terres De Rêves first saw the light of day.

Anita's ceramic tableware line is characterized by in-depth detail, by a range of imperfections and peculiarities which in turn flow into a new, fragile form of perfection. A proven perfection, because with the huge success of the previously designed objects in this collection, and the popular demand for other sizes, extending the range could not be far off.

Starting from something that she misses, or as a creative protest against everyday objects that she simply does not find sufficiently attractive or useful, she brings artisan ceramics to life in a magical way, using different layers and colours of enamel. And for Serax, there is not a speck of doubt that her new herb pots, table accessories, carafes, vases and lamps are attractive and extremely useful.



